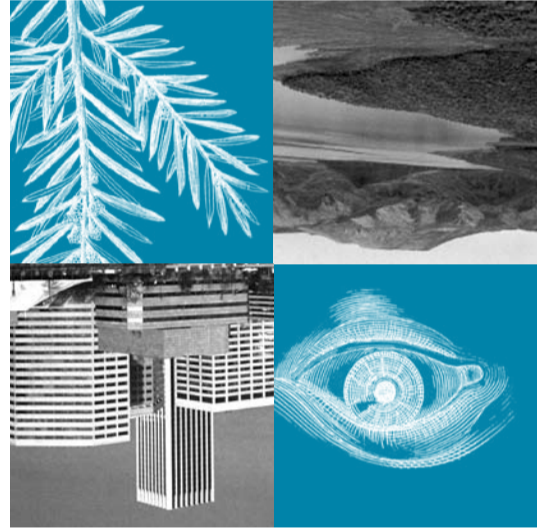


Environmental Studies  
Lewis & Clark College  
0615 S.W. Palatine Hill Road  
Portland, Oregon 97219

NONPROFIT ORG.  
U.S. POSTAGE  
**PAID**  
PORTLAND, OR  
PERMIT NO. 438

Lewis & Clark College  
Symposium on Environmental Affairs  
October 14-16, 2008

*11th Annual*  
**Symposium on  
Environmental Affairs**  
Lewis & Clark College  
October 14-16, 2008  
Presented by students and faculty of the Environmental  
Studies Program at Lewis & Clark College. For details, visit  
[www.lclark.edu/dept/envs/symposium.html](http://www.lclark.edu/dept/envs/symposium.html).



Lewis & Clark College's Environmental Studies Program situates environmental problems and solutions in a scholarly context, drawing on and working alongside a range of academic disciplines to help build a more livable world. The Symposium on Environmental Affairs is an opportunity to interact with students, faculty, and environmental professionals who will share their varied perspectives on some of the most important environmental issues of our time. All symposium events are open to the public at no charge.

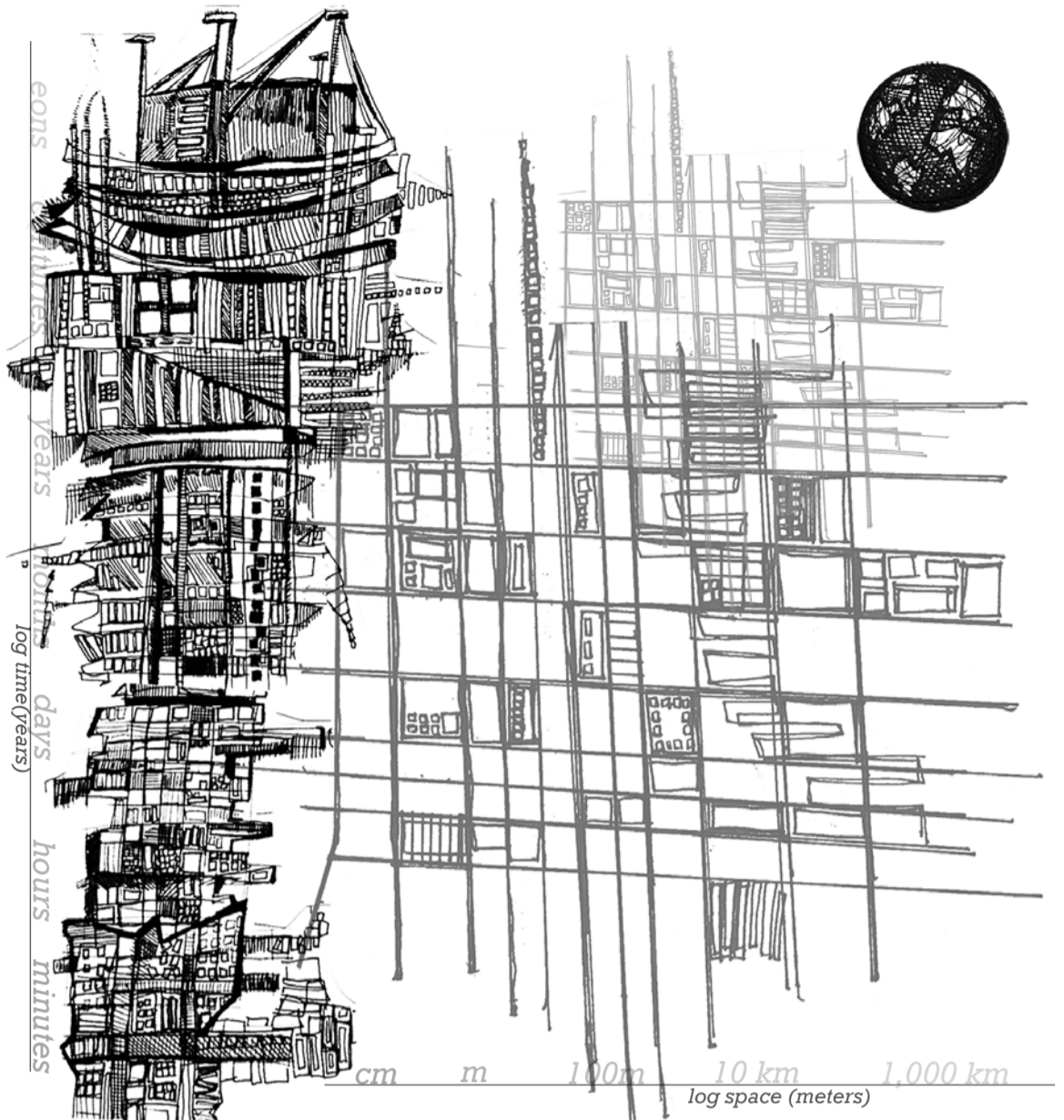
# Scales of Sustainability

As colleges, corporations, and cities across the country scramble to embrace sustainability, it is worth asking what exactly we hope to achieve. The 11th annual Symposium on Environmental Affairs draws together students, practitioners, and community members to discuss sustainability in time and space. Does sustainability mean eternal equilibrium, or is there a role for destruction and restoration? Are local systems always more sustainable? What exactly would global sustainability look like in today's complex world?

## Artist's Statement

*Sustainability begins at the smallest level with the materials used to build a structure. From there, sustainability issues extend outward to how the structure fits into its neighborhood...its city...its world. Through this drawing, I am addressing the idea of scale: When we talk about being "sustainable," what scale are we using? Just one, or many? My piece seeks to view the campus/the city from multiple perspectives and environments at the same time.*

—Maria Grina '08



## 11th Annual Symposium on Environmental Affairs

### Keynote addresses

Evening keynote lectures by two prominent scholars who work in the field of environmental studies will be held in Agnes Flanagan Chapel. Each lecture will be followed by a reception.

### “Micro-Managing Sustainability: Gender, the Household, and the State”

Susan Buckingham, Director of Centre for Human Geography, Brunel University  
October 14, 7:30 p.m.



### “Pondering Scales of Sustainability: From People to the Planet”

Lance Gunderson, Associate Professor of Environmental Studies, Emory University  
October 15, 7:30 p.m.

**Sessions** All panel discussions and workshops will take place in Templeton Campus Center.

October 14, 4 p.m.

#### What Do We Want to Sustain at Lewis & Clark College?

In higher education, different groups measure sustainability using different scales, from the campus footprint to our global impact. Who are we, and what do we want to sustain?

October 14, 5:30 p.m.

#### Urban Development and Gentrification in Portland

How do we sustain neighborhoods? This panel will examine how issues of race, land use, and economic growth affect neighborhood sustainability in North Portland.

October 15, 4 p.m.

#### Time and Space in Sustainable Art

How can art help us explore what we desire in sustainability? Notable figures from the Portland art scene will discuss how artists wrestle with questions of scale and sustainability in their work.

October 15, 5:30 p.m.

#### Climate Change and International Development

What does an increased awareness of global warming mean for sustainable development in industrializing countries? Is there a way to balance the desire for development with the threat of climate change?

October 16, 4 p.m.

#### Regional Food Sustainability

Efforts to create more sustainable food systems have increased interest in local production and consumption models. What is the ideal scale for food production and consumption?

October 16, 5 p.m.

#### Strategies for Sustainability: Where do we go from here?

Community members are invited to join the keynote speakers, panelists, students, and faculty members to brainstorm ways to apply some of the strategies discussed over the past two days.

Lewis & Clark College  
October 14-16, 2008

Free and open to the public ■ Parking is \$4 before 4 p.m., \$2 from 4-7 p.m., and free after 7 p.m.  
Information: 503-768-7719 or [www.lclark.edu/dept/envs/symposium.html](http://www.lclark.edu/dept/envs/symposium.html)

Lewis & Clark  
College

